

FIRE ALARM CALL POINTS

Hazardous Location, Weatherproof BG Range & PB Range



Introduction

These manual fire alarm call points have been designed for use in hazardous locations and harsh environmental conditions. The GRP enclosures are suitable for use offshore or onshore, where light weight combined with a high level of corrosion resistance is required.

European, Russian, Chinese and other worldwide approvals are available, refer to main section of catalog.

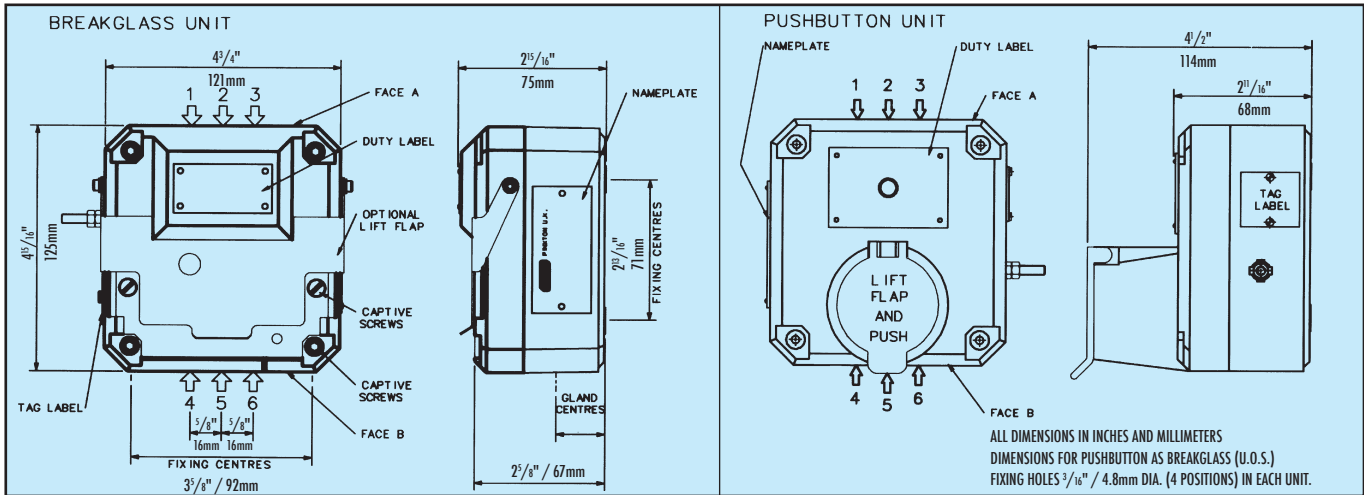
- ★ UL listed for
 - Hazardous locations:
 - Class I, Div. 2, Groups A-D.
 - Class II, Div. 2, Groups F & G*
 - Class I, Zone 2.
 - Ordinary locations: Fire Alarm Boxes.
- ★ CSA certified.
- ★ CSFM approved.
- ★ ATEX approved.
- ★ NEMA 4x & 6, IP66 & 67.
- ★ *Certified temperature –13°F to +131°F.
–25°C to +55°C.
- ★ In line and end of line resistors fitted.
- ★ Optional LED to indicate operation.
- ★ Plastic break glass element available.
- ★ Corrosion resistant GRP.
- ★ Retained stainless steel cover screws.
- ★ Optional lift flap.
- ★ Key operated test facility on BG.
- ★ *Depending on model.

Cooper MEDC Ltd, Colliery Road,
Pinxton, Nottingham NG16 6JF, UK.
Tel: +44 (0)1773 864100
Fax: +44 (0)1773 582800

Cooper MEDC (USA) 3413 North Sam Houston Parkway,
West, Houston, Texas 77086, USA.
Tel: +1 (713) 937 9772
Fax: +1 (713) 937 9773

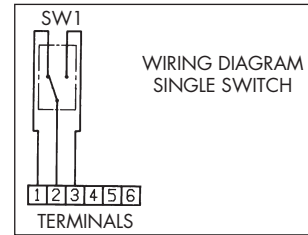
Sales Enq. Fax: +44 (0)1773 582830 Sales Orders Fax: +44 (0)1773 582832
E-Mail: medc.sales@cooperindustries.com Web: www.medc.com



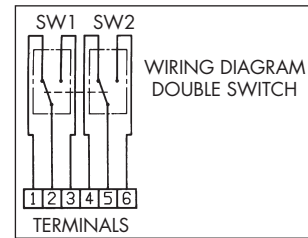


Specification

Certification:	UL Listed – Hazardous locations: Class I, Div. 2, Groups A-D and Class I, Zone 2. Class II, Div. 2, Groups F & G. (PB Only) UL Listing No. E186629. Ordinary locations: Fire Alarm Boxes. UL Listing No. S8117. CSA Certified to C22.2 (PB only), Nos. 0-M, 0.4M, 14-M, 25,30-M, 94, 142-M 1987, 157M 1987, 157-92, Enclosure Type 4, 4A, Class 1, Groups A-D, Cert. No. 79120. ATEX Approved: EN50014, EN50018, EN50019, EN50028. Cert. No. BAS02ATEX2105X (BG & PB), EExed IIC T6 (switch only), EExedm IIC T4 (other versions).
Voltage:	Up to 240V.
Certified Temperature:	BGUL: -13°F to +131°F (-25°C to +55°C); PBUL: -13°F to +131°F (-25°C to +55°C). PB (CSA): -58°F to +104°F (-50°C to +40°C).
Ingress Protection:	NEMA 4x & 6, IP66 & 67.
Terminals:	6 x 14 AWG standard (BGUL), 7 or 9 x 14 AWG standard.
Switch Rating (1 or 2 changeover switches fitted):	Max Rating 240VAC, 3A.
Cable Entries:	Up to 4 entries 1/2" NPT.
Weight:	2.6 lb/1.2kg (Varies with model & entries).
Material:	Glass reinforced polyester.
Finish:	Red epoxy painted finish as standard or to Customer's specification.
Resistors:	Various configurations available on versions up to 24V, 470R minimum.
LED Indication:	A high intensity red LED can be fitted as an optional extra to indicate operation on versions up to 24V.
Labelling:	BG Glass label – reads either (1) Fire Break glass – press here. (2) Break glass – press here. (3) Worded to Client's requirements. PB & BG Duty label – worded to Client's requirements. Riveted on. PB & BG Tag label – worded to Client's requirements. Screwed on.



Basic single changeover switch wiring diagram



Basic double changeover switch wiring diagram

For versions containing inline and end of line resistors, please specify your requirements.

Ordering Requirements

The following code is designed to help in the selection of the correct unit. Build up the reference number by inserting the code for each component into the appropriate box. **For standard products, available ex-stock, contact sales office for details.**

Model	Certification	Entries	Labels	Switches	Features	Terminals	Finish
<input type="text"/>	<input type="text"/>	<input type="text"/>	<input type="text"/>	<input type="text"/>	<input type="text"/>	<input type="text"/>	<input type="text"/>
Model		Entries	Code	Labels	Code	Features	Code
BG		1/2" NPT	*C	None	0	None	N
PB		*Prefix entry size (see diagram above) with entry position code e.g. 1C, 3C.		Glass label (1) reqd.	1	LED	A
				Glass label (2) reqd.	2	Lift Flap (BG only)	B
				Glass label (3) reqd.	3	Resistor Series	*C
				Duty label reqd.	4	Resistor EOL	*D
				Tag label reqd.	5	Earth Continuity†	F
				Specify wording on 3, 4 or 5 as required.		Self reset (PB only)	M
						Plastic element replaces Break glass	P
						†Must be selected when selecting CSA certification *Specify values	
Certification	Code			Switches	Code	Terminals	Code
UL Listed	UL			Single changeover	*S	*6 x 14 AWG (BGUL only)	6
UL (ordinary locations)	UW			Double changeover	*D	7 x 14 AWG (standard)	7
CSA Certified*	IC			*Prefix with voltage A for A.C. – D for D.C.		9 x 14 AWG (optional)	9
*PB model only.							*BGUL only available with six terminals
To order ATEX version see European data sheet.							



All the above specifications, dimensions, weights and tolerances are nominal (typical) and MEDC reserve the right to vary all data without prior notice. No liability is accepted for any consequence of use.