

# ISO-6(A)

## Six Fault Isolator Module



Intelligent Addressable Devices

### General

The ISO-6(A) Six Fault Isolator Module provides six equivalent circuits that will allow a portion of the communications loop to continue operating when a short circuit occurs on that loop. An amber LED indicator will blink in the normal state for each of the six inputs and will latch on during a short circuit condition. The module will automatically restore the communications loop to normal condition when the short circuit is removed.

The ISO-6 Six Isolator Module is an automatic switch that opens when the line voltage drops below four volts. Isolator modules should be spaced between groups of sensors or modules in a loop to protect the rest of the loop. If a short occurs between any two isolators, then both isolators immediately switch to an open circuit state and isolate the devices between them. The remaining units on the loop continue to fully operate.

### Features

- Removable 12 to 18 AWG plug-in terminal blocks.
- Individual LED status indicators.
- Six individual, Class B isolator circuits.
- Mount up to two modules in BB-XP enclosure (optional).
- Mount up to six modules on a CHS-6 chassis in a CAB-4/CAB-3 series, EQ series, or BB-25 cabinet.
- Mounting hardware included.

### Applications

The ISO-6 Fault Isolator Modules should be spaced between groups of sensors in an SLC to protect the rest of the loop. Use to isolate short circuit problems within a section of a loop so that other sections can continue to operate normally. The ISO-6 supports a maximum of 25 devices between isolators.

When more than 100 Isolator Modules are connected to an SLC loop, the address capacity of the loop is reduced by two (2) addresses for every isolator device in excess of 100.

### Specifications

**Normal Operating Voltage:** 15-32 VDC.

**Stand-By Current:** 450  $\mu$ A per circuit, 2.7 mA all circuits.

**Maximum Current Draw:** 17 mA per circuit in isolation, 102 mA with all circuits in isolation.

**Temperature Range:** 32° F to 120° F (0° C to 49° C).

**Humidity:** 10% to 85% non-condensing.

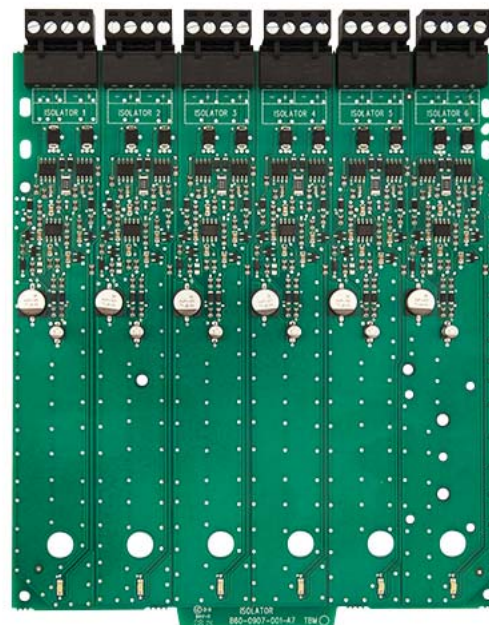
**Dimensions:** 6.8"H x 5.8"W x 1.0"D.

**Shipping weight:** 1.1 lb. (0.50 kg) including packaging.

**Mounting Options:** CHS-6 Chassis, BB-XP Cabinet, BB-25 Cabinet, CAB-4 Series Cabinet, EQ Series Cabinet.

**Wire Gauge:** 12 AWG (3.31 mm<sup>2</sup>) to 18 AWG (0.821 mm<sup>2</sup>).

**Compatible Devices:** See the documentation for your panel, and the *Device Compatibility Document*.



### Agency Listings and Approvals

The listings and approvals below apply to ISO-6 components. In some cases, certain modules or applications may not be listed by certain approval agencies, or listing may be in process. Consult factory for latest listing status.

- **UL/ULC Listed:** S3705.
- FM Approved.
- CSFM: 7300-1653-0234.

### Product Line Information

**ISO-6:** Six Isolator Module.

**ISO-6A:** ULC-listed version of ISO-6.

**BB-XP:** Optional cabinet for one or two modules. **Door Dimensions:** 9.234" (23.454 cm) wide (9.484" [24.089 cm] including hinges), x 12.218" (31.0337 cm) high, x 0.672" (1.7068 cm) deep. **Backbox Dimensions:** 9.0" (22.860 cm) wide (9.25" [23.495 cm] including hinges), x 12.0" (30.480 cm) high x 2.75" (6.985 cm). **Chassis Dimensions (installed):** 7.150" (18.161 cm) wide overall x 7.312" (18.5725 cm) high interior overall x 2.156" (5.4762 cm) deep overall.

**BB-25:** Optional cabinet for up to six modules mounted on CHS-6 chassis (below). **Door Dimensions:** 24.0" (60.96 cm) wide x 12.632" (32.0852 cm) high, x 1.25" (3.175 cm) deep, hinged at bottom. **Backbox Dimensions:** 24.0" (60.96 cm) wide x 12.550" (31.877 cm) high x 5.218" (13.2537 cm) deep.

**CHS-6:** Chassis, mounts up to six modules in a CAB-4 Series cabinet (see DN-6857), EQ Series cabinet (see DN-60229), or BB-25 cabinet.

---

Notifier® is a registered trademark of Honeywell International Inc.  
©2015 by Honeywell International Inc. All rights reserved. Unauthorized use  
of this document is strictly prohibited.



This document is not intended to be used for installation purposes.  
We try to keep our product information up-to-date and accurate.  
We cannot cover all specific applications or anticipate all requirements.  
All specifications are subject to change without notice.

For more information, contact Notifier. Phone: (203) 484-7161, FAX: (203) 484-7118.  
[www.notifier.com](http://www.notifier.com)

---